

Welcome!

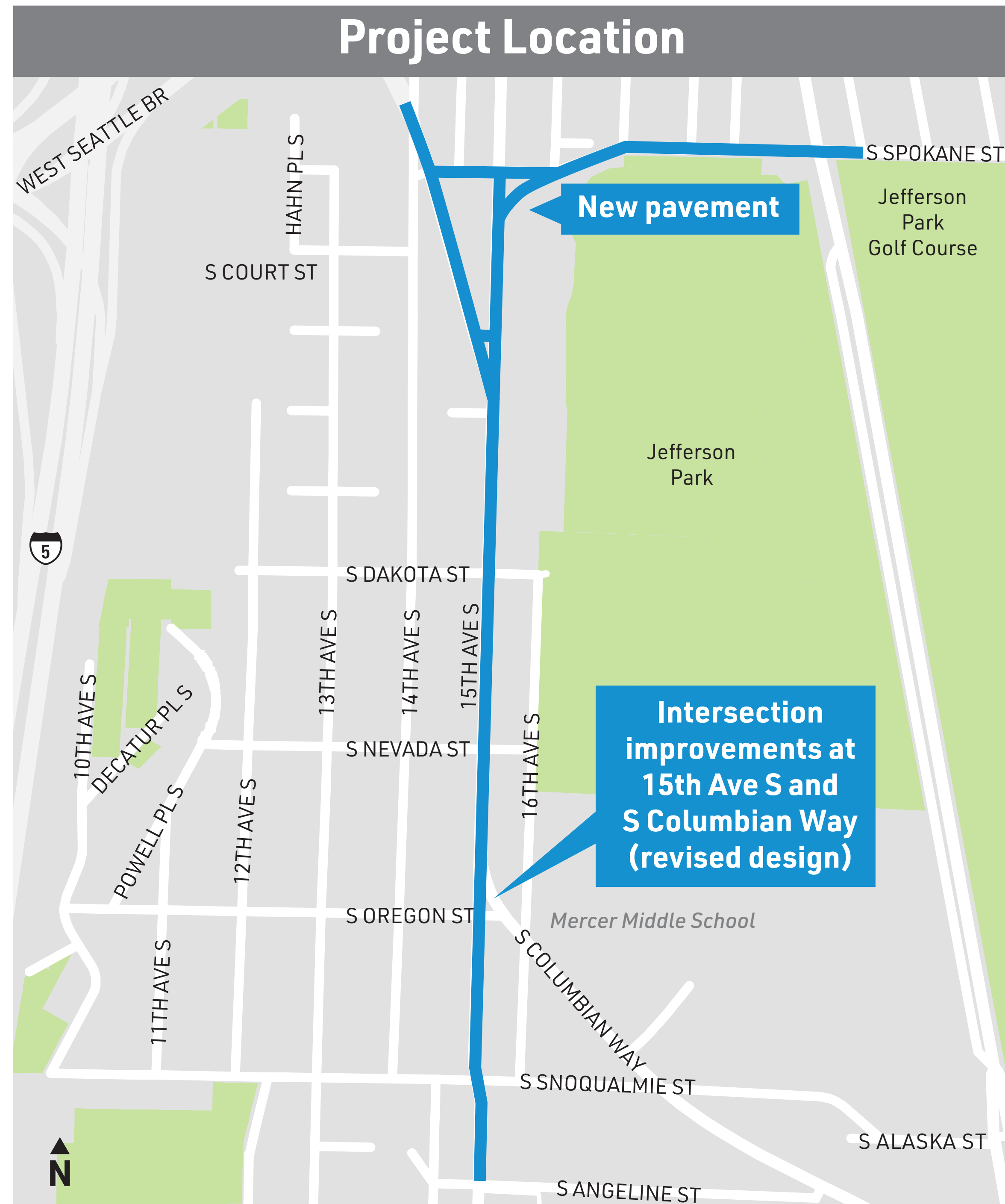
15th Ave S Improvements

PUBLIC MEETING

6:30 – 8 PM



Project Background



We'll repave:

- 15th Ave S
- S Spokane St between S Columbian Way and 18th Ave S

We will:

- Resurface the roadway
- Install new, visible lane markings
- Make spot repairs on sidewalks
- Make a pedestrian improvement at 15th Ave S and S Spokane St
- Add curb ramps to make sidewalks more accessible

In addition to paving, we'll make improvements at the 15th Ave S and S Columbian Way intersection.

Existing Conditions

15th Ave S provides an important connection for people traveling between Beacon Hill and Rainier Valley. It needs to be repaved and restriped in the near future to extend its useful life.



The roadway along 15th Ave S will be repaved as part of this project.

The intersection of 15th Ave S and S Columbian Way is confusing for people walking, rolling, biking, and driving. It can be made safer, bringing us closer to Vision Zero: Seattle's plan to end traffic deaths and serious injuries on city streets by 2030.



The existing pedestrian island at the intersection of 15th Ave S and S Columbian Way will be modified as part of this project.

Paving

- We repave arterial streets in poor condition to make them safer and smoother, and to extend their useful life
- We prioritize paving projects based on pavement condition, traffic volume, geographic equity, cost, and opportunities for grants or coordination with other projects
- Paving streets creates opportunities to improve street safety and move people and goods more efficiently



Workers repave a street in Judkins Park.

Construction

We know construction can be disruptive. We're committed to being good neighbors and will work to minimize impacts.

Ways we do this include:

- Being available for questions (in-person, hotline, email)
- Providing advance notice about construction through email updates and other promotions
- Ensuring project signage is clear and effective to encourage safety and caution near active work zones
- Maintaining a website with up-to-date construction information



What to expect during construction:

- There will be noise, dust, vibration, and large equipment
- Roads, lanes, and sidewalks may be closed, reduced, or detoured where necessary
- Driveways may be temporarily blocked, or impacted for several days at a time. Businesses and residents will be notified of any driveway closures in advance.
- Business access will be maintained

Share your feedback

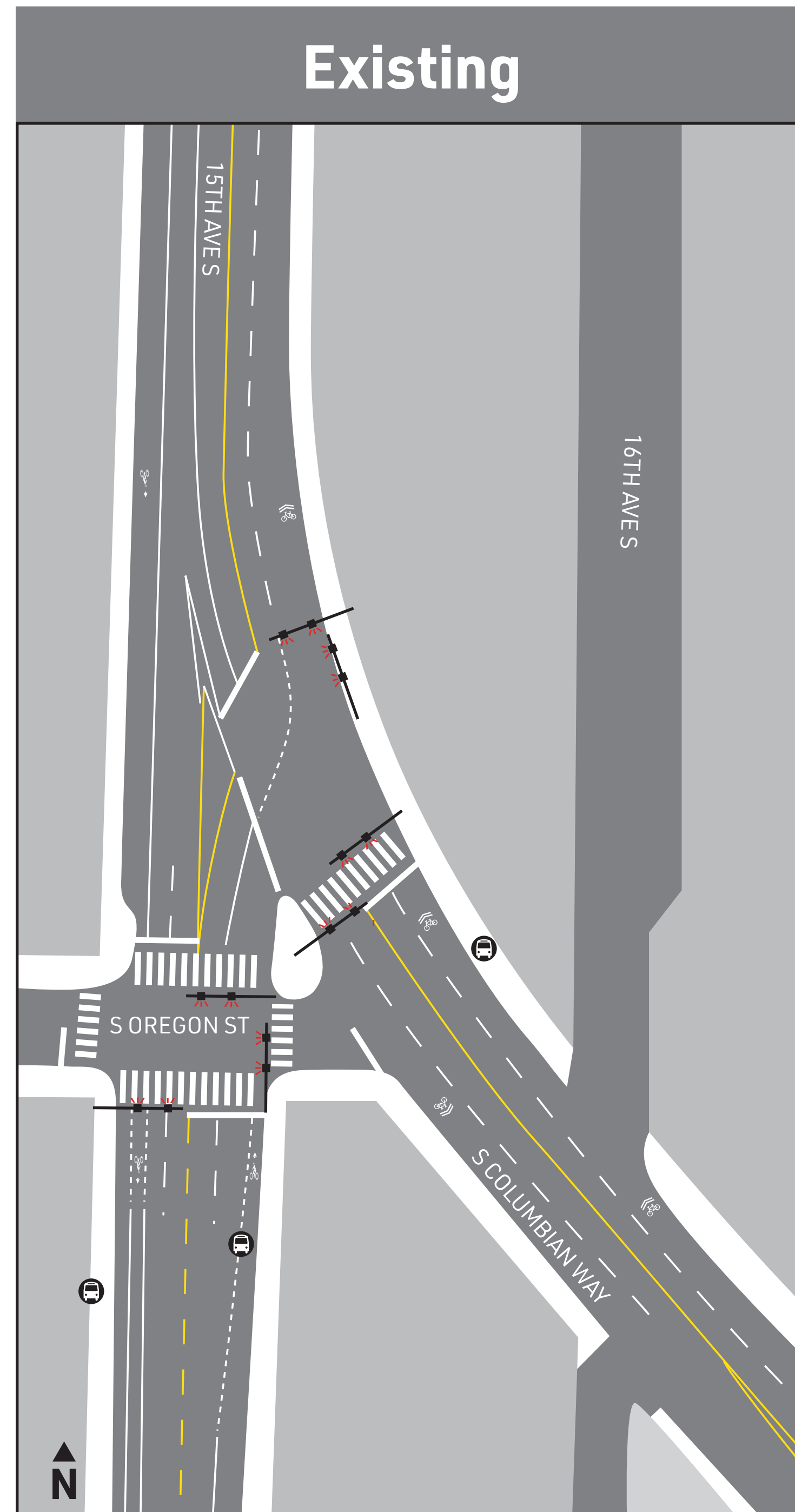
We
want
to hear
from
you

- What do you want to know about the timing or sequencing of construction?
- What will help ensure that you still have access to the project area during construction?
- What are your thoughts on the revised design for the 15th Ave S and S Columbian Way intersection?
- What do you want SDOT to know about how construction could impact you, your family, or your business?

15th Ave S and S Columbian Way Intersection Improvements

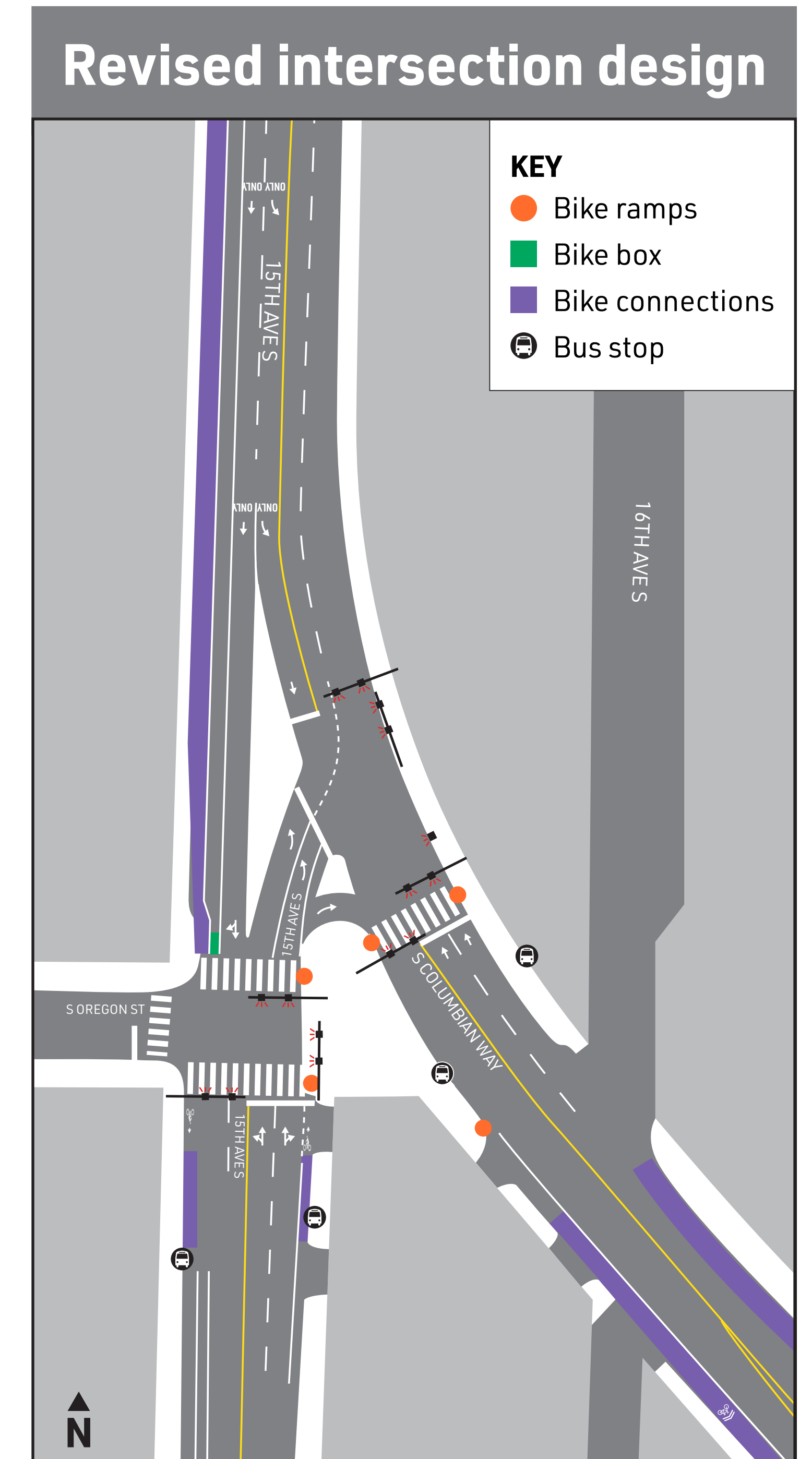
Over the last two years, we've engaged with neighbors and businesses to develop an intersection design that fits the needs of everyone.

Based on feedback we heard, we developed a new proposed concept for the 15th Ave S and S Columbian Way intersection.



What we heard:

- Keep pedestrians safe
- Retain the traffic signal at the intersection of 15th Ave S and S Oregon St
- Use space for traffic improvements, not landscaping
- Business parking along 15th Ave S should be maintained
- Maintain traffic operations
- Provide safety and accessibility benefits for people walking, biking, driving, and rolling



Construction Schedule

EARLY 2020

Finish design

EARLY TO MID-2020

Pre-construction coordination with the community

FALL 2020

Begin construction

2021

Complete construction

Stay Involved

PROJECT INFORMATION AND CONTACT

OUTREACH LEAD: Adonis Ducksworth

EMAIL: 15thAveAAC@seattle.gov

HOTLINE: (206) 775-8719

WEBSITE: www.seattle.gov/transportation/15th-Ave-S-AAC

